



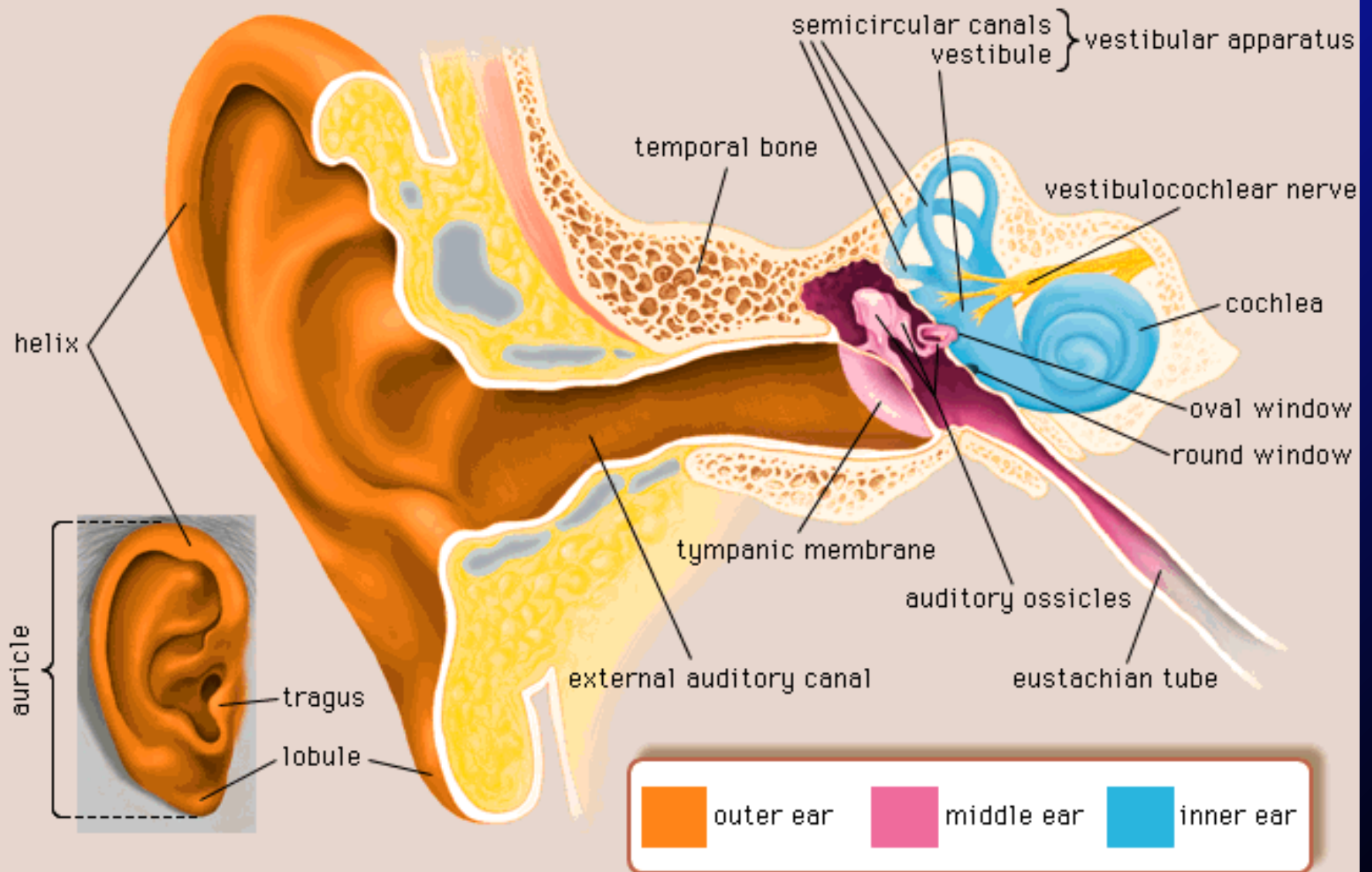
Hearing Impairment

What is Hearing Impairment?

Hearing impairment refers to a defect or damage to the hearing mechanism which may occur in any part of the ear. It leads to hearing disability or loss of hearing which may range in severity from mild to moderate to profound.

Hearing Impairment-

- The hard of hearing child
- The deaf child
- The in- between child

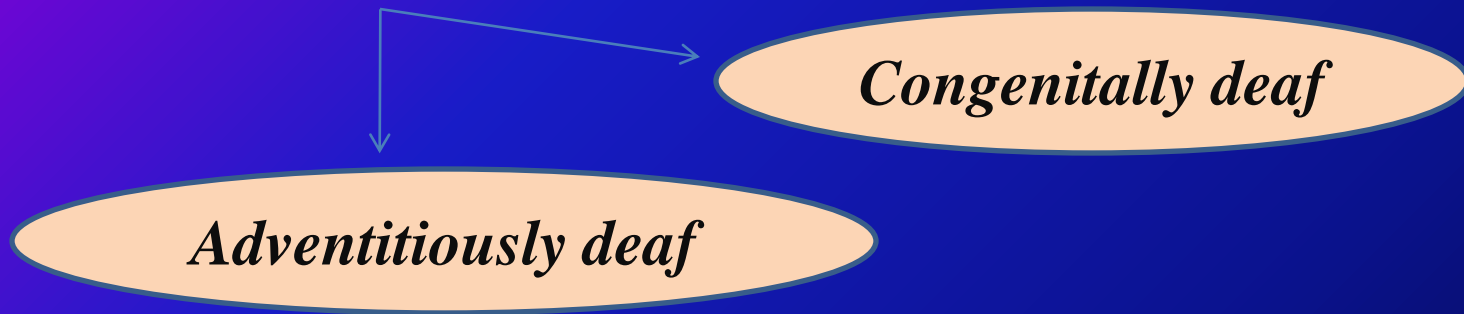


©1997 Encyclopaedia Britannica, Inc.

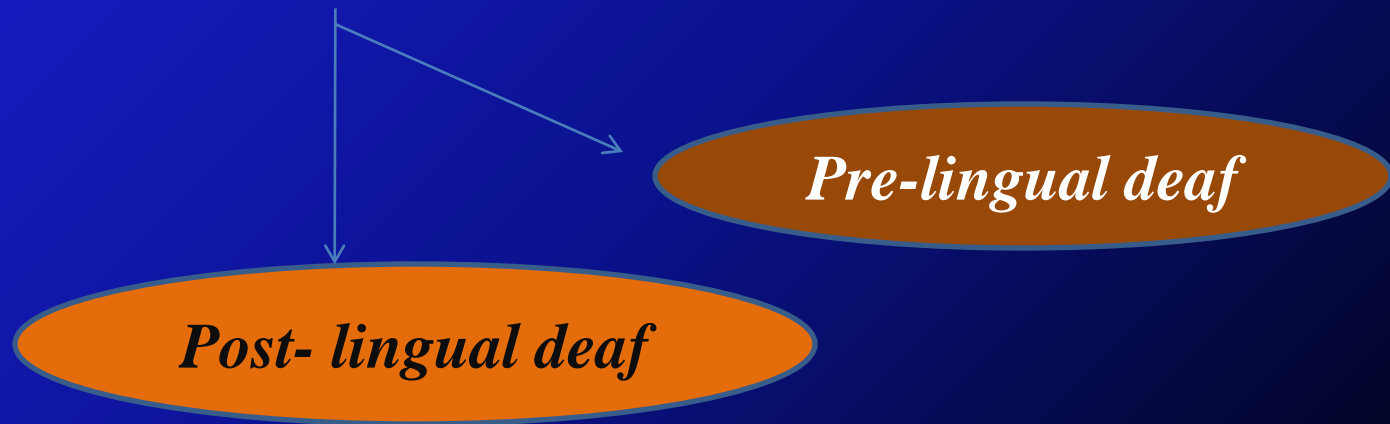
Classification of Hearing Impaired:

- Based on degree of hearing loss-
 - Mild (db 26-40)
 - Moderate (db 41-55)
 - Severe (db 56-70)
 - Profound (db 71-90)
 - Near total deafness (db 91 and above)
 - Total deafness (No Hearing)

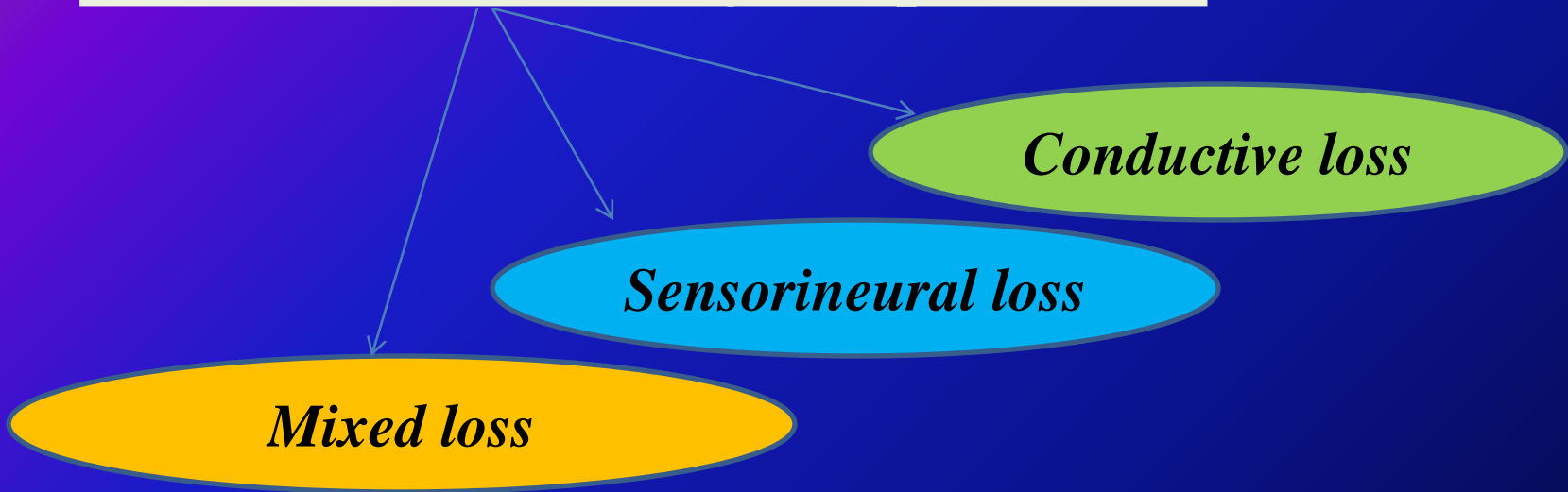
- *Based on age of onset-*



- *Based on language experience-*



- *Based on location of the problem-*



- *Central deafness*

Characteristics of Hearing Impaired children-

- Language and speech development.
- Intellectual ability.
- Academic achievement.
- Social and occupational adjustment.

Causes of Hearing Impairment-

- *Long-term exposure to environmental noise*
- *Genetic*
- *Disease or illness*
- *Medications*
- *Physical trauma*

Care and training of the hearing impaired



Care and Training of Hearing Impaired-

Parent's responsibility –

- Early identification of hearing impairment
- Timely referral of cases.
- Acceptance of the impaired child.
- Sharing responsibility for training of the child.
- Encouraging the child to use hearing aid regularly.
- Preparing the child for integration in the school.

- **School's responsibility-**

Three methods of training deaf children-

1. The oral method

- *Finger spelling*
- *Sign language*

2.The manual method

- *Lip reading*
- *Auditory training*

3. Total communication method.

Role of teachers in managing hearing impaired children-

- Advise parents for medical treatment of the child.
- Attend short term training to know and adjust with the implications of the handicapped.
- Develop positive attitude.
- Keep auditory and visual distracters to the minimum.
- Ensure proper seating arrangement in class.
- Ensure use of the hearing aids.
- Encourage questions.
- Adapt curriculum to needs of the child.
- Give opportunities of equal participation in class.

THANK YOU!!!!!!