

INSTRUCTION MANUAL FOR

SEWING MACHINE

**Target group: 3rd year leather
engineering (footwear stream)**

Prepared by Mr. Wendwosen Ebabu

2020 G.C

IMPORTANT SAFETY INSTRUCTIONS

Sewing machine is not a toy. Do not allow children to play with this machine. The machine is not intended for use by children or mentally infirm persons without supervision. This sewing machine is designed and manufactured for household use only.

Read all instruction before using this sewing machine.

DANGER – To reduce the risk of electric shock:

1. An appliance should never be left unattended when plugged in. Always unplug this sewing machine from the electric outlet immediately after using and before cleaning.
2. Always unplug before replacing a sewing machine bulb. Replace bulb with same type rated 15 watts.
3. Do not reach for the appliance that has fallen into water. Unplug immediately.
4. Do not place or store appliance where it can fall or be pulled into a tub or sink. Do not place in or drop into water or other liquid.

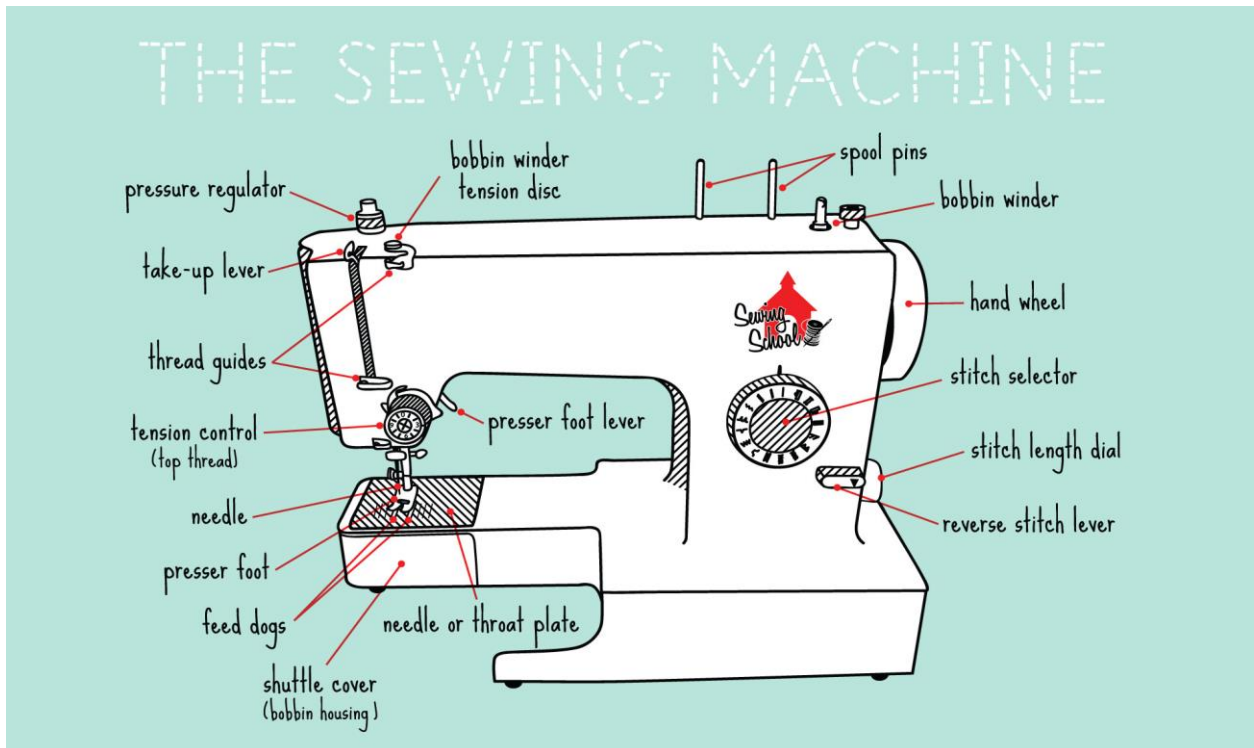
WARNING — To reduce the risk of burns, fire, electric shock, or injury to persons:

1. Do not allow children to play with the machine. The machine is not intended for use by children or infirmed persons without proper supervision.
2. Use this appliance only for its intended use as described in this owner's manual. Use only attachments recommended by the manufacturer as contained in this owner's manual.
3. Never operate this sewing machine, if it has a damaged cord or plug, if it is not working properly, if it has been dropped or damaged, or dropped into water.
4. Never operate the appliance with any air opening blocked. Keep ventilation opening of this sewing machine and foot controller free from accumulation of lint, dust and loosen cloth.
5. Never drop or insert any object into any opening.
6. Do not use outdoors.
7. Do not operate where aerosol (spray) products are being used or where oxygen is being administered.

8. To disconnect, turn all controls to the off (“O”) position, then remove plug from outlet.
9. Do not unplug by pulling on cord. To unplug, grasp the plug, not the cord.
10. Keep fingers away from all moving parts. Special care is required around the sewing machine needle.
11. Always use the proper needle plate. The wrong plate can cause the needle to break.
12. Do not use bent needles.
13. Do not pull or push fabric while stitching. It may deflect the needle causing it to break.
14. Switch this sewing machine off (“O”) when making any adjustment in the needle area, such as threading the needle, changing the needle, threading the bobbin or changing the presser foot, and the like.
15. Always unplug this sewing machine from the electrical outlet when removing covers, lubricating, or when making any other adjustments mentioned in this owner’s manual.

Section 1; Parts of sewing machine

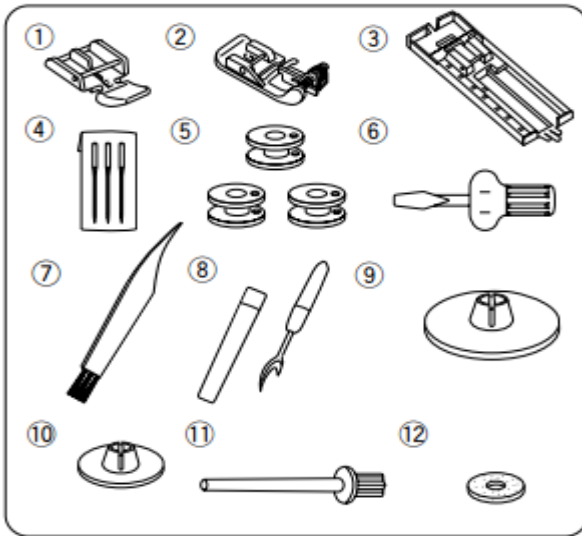
Functions of Sewing Machine Parts:



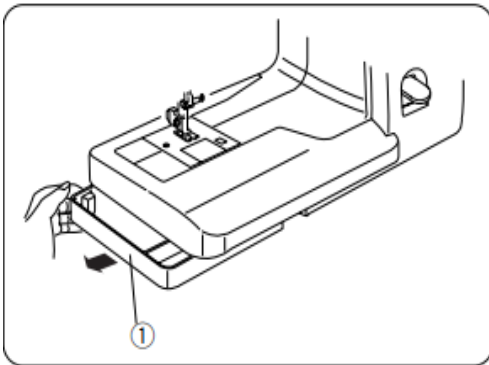
1. Spool pin:
 - The main function of spool pin is to hold the spool of thread.
2. Bobbin binder spindle:
 - During winding, bobbin is placed here.
3. Bobbin winder stopper:
 - When bobbin reaches its optimum capacity tan bobbin winder stopper stops the bobbin winding.
4. Stitch width dial:
 - The main object of stitch width dial is to control the zigzag stitch.
5. Pattern selector dial:
 - Pattern selector dial is to set the symbol of the desired stitch pattern.
6. Hand wheel:
 - Hand wheel is used to raise and lower the need, which is situated in the right side of the sewing machine.
7. Stitch length dial:

- Stitch length dial is used to control the length of the stitch.
8. Reverse stitch lever:
 - The machine will sew in the reverse while the lever is pushed.
 9. Power switch:
 - Power switch means the off-on office of the sewing machine. Normally power switch is located at the right side of the machine.
 10. Bobbin winder thread guide:
 - These types of thread guide are used during bobbin winding.
 11. Thread tension dial:
 - Thread tension dial is used to control the tension on the top thread.
 12. Thread take-up lever:
 - During sewing the top thread passes through the thread take-up lever. Thread take-up lever moves up and down with the needle.
 13. Needle clamp screw:
 - Needle clamp screw holds the needle in its actual place.
 14. Presser foot:
 - Presser foot holds the fabric in its definite place.
 15. Bobbin covers:
 - During sewing bobbin cover protects and covers the bobbin holder.
 16. Bobbin cover release button:
 - This type of button is used to release the cover for entrance to the bobbin.
 17. Feed dog:
 - During sewing, feed dog pulls the fabric in forward.
 18. Needle:
 - Needle is used to form a stitch in the garments.
 19. Needle plate:
 - Needle plate is a metal plate which is situated under the needle and presser foot. It helps to move the fabric/leather forward during sewing.

Section 2; standard accessories



1. Zipper foot
2. Blind hemming stitch foot
3. Sliding buttonhole foot
4. Needles
5. Bobbins
6. Screwdriver
7. Lint brush
8. Seam ripper (buttonhole opener)
9. Spool holder (large)
10. Spool holder (small)
11. Additional spool pin
12. Felt cushion

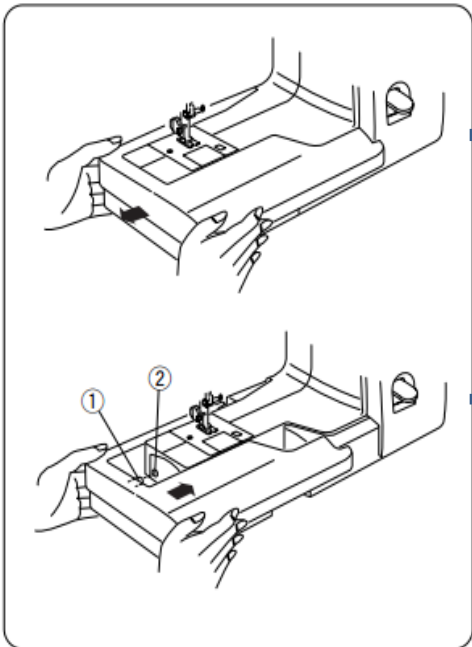


Accessory storage

The standard accessories can be stored in the accessory storage box under the extension table.

Draw out the storage box from the table as shown.

①, Accessory storage box



Extension Table

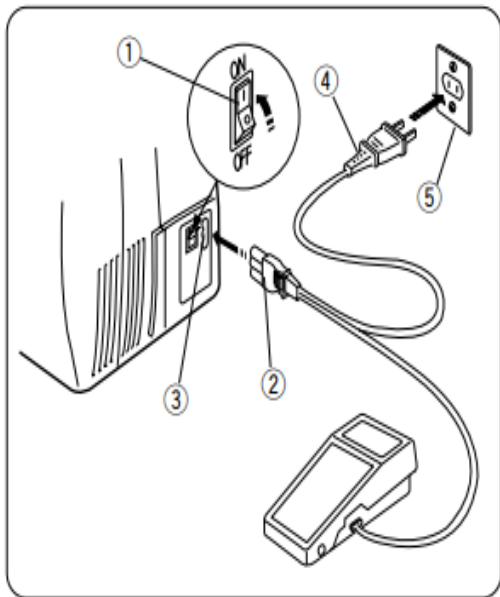
To detach:

Pull the extension table to the left.

To attach:

Insert the pin into the hole and push the extension table to snap it in place.

- ①, Pin
- ②, Hole



GETTING READY TO SEW

Connecting the Power Supply

- ✓ Turn the power switch off.
- ✓ Insert the machine plug into the machine socket.
- ✓ Insert the power supply plug into the wall outlet.
- ✓ Turn the power switch on.
 - ① Power switch
 - ② Machine plug
 - ③ Machine socket
 - ④ Power supply plug
 - ⑤ Wall outlet

Section 3; operating instruction of sewing machine

Operating Instructions:

The symbol "O" of a switch indicates the "off" position of a switch.

For an appliance with a polarized plug (one blade wider than the other):

To reduce the risk of electrical shock, this plug is intended to fit in a polarized outlet only one way. If it does not fit fully in the outlet, reverse the plug. If it still does not fit, contact a qualified electrician to install the proper outlet. Do not modify the plug in any way.

The foot controller Model YC-482J or TJC-150 is used with the sewing machine Model 7318 (USA market only).

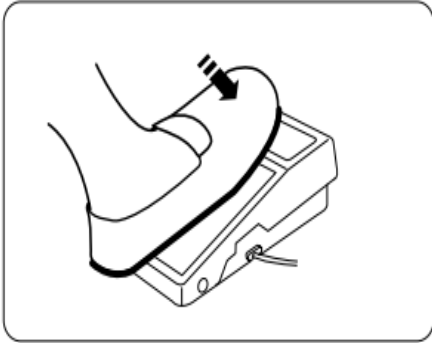
⚠ WARNING:

While in operation, always keep your eyes on the sewing area, and do not touch any moving parts such as the thread take-up lever, handwheel or needle.

Always turn off the power switch and unplug from the power supply:

- When leaving the machine unattended.
- When attaching or removing parts.
- When cleaning the machine.

Do not place anything on the foot control, otherwise the machine will run intermittently.

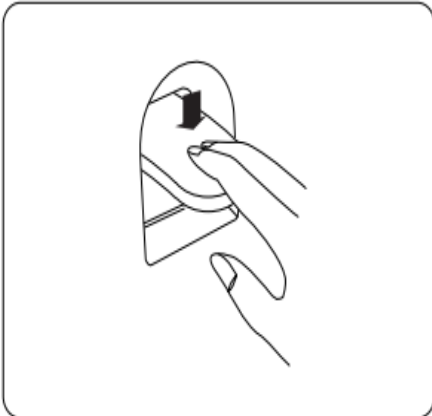


Controlling the Sewing Speed

Foot control

Sewing speed can be varied by the foot control.

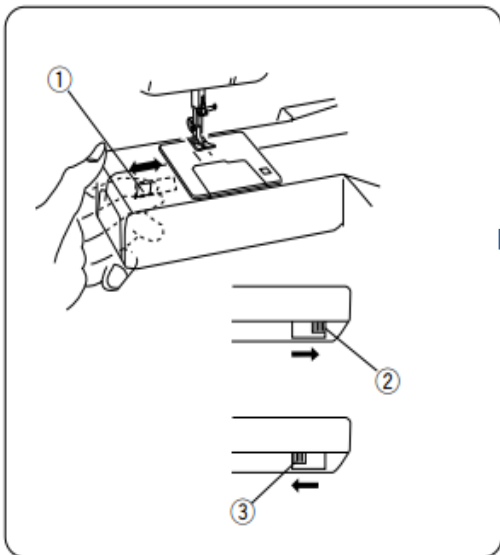
The harder you depress the foot control, the faster the machine runs.



Reverse Stitch Lever

Push the reverse stitch lever down to sew in reverse.

The machine will sew in reverse while the lever is pushed.



Dropping the Feed Dog

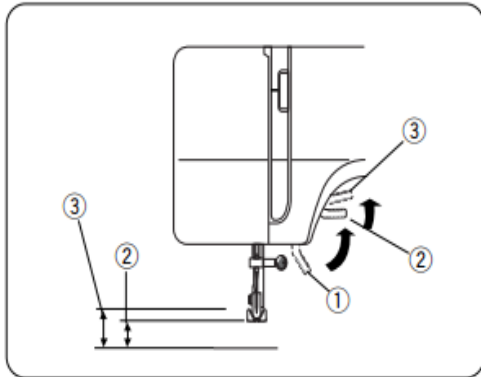
The drop feed lever is located underneath the free-arm bed on the backside of the machine.

To drop the feed dog, push the lever in the direction of the arrow, as illustrated.

To raise the feed dog, push the lever in the direction of the arrow, as illustrated, and turn the handwheel toward you.

The feed dog must be up for regular sewing.

- ① Drop feed lever
- ② Raised position
- ③ Lowered position

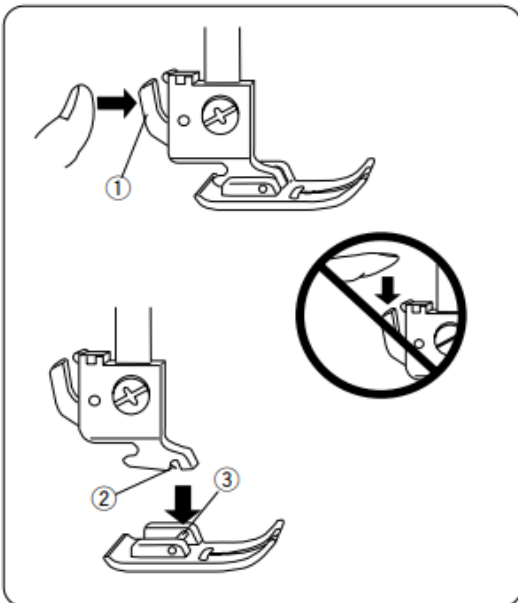


Raising and Lowering the Presser Foot

The presser foot lifter raises and lowers the presser foot.

You can raise the foot about 1/4" (0.6 cm) higher than the normal up position for easy removal of the presser foot, or to help you place heavy fabric under the foot.

- ①, Lowered position
- ②, Normal up position
- ③, Extra up position



Changing the Presser Foot

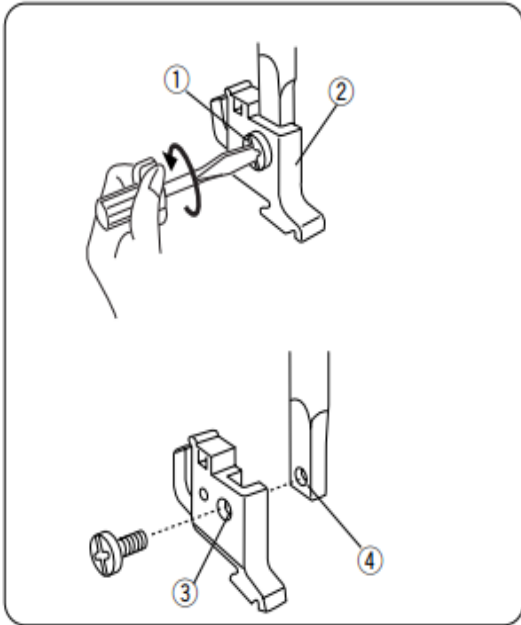
To remove:

Raise the needle to its highest position by turning the handwheel counterclockwise. Raise the presser foot, and press the lever on the back of the foot holder.

- ①, Lever

CAUTION:

Turn OFF the power switch before changing the foot. Always use the proper foot for the selected pattern. The wrong foot can cause the needle to break. Do not push the lever down to prevent it from being broken.



Removing and Attaching the Foot Holder

WARNING:

Turn OFF the power switch before detaching or attaching the foot holder.

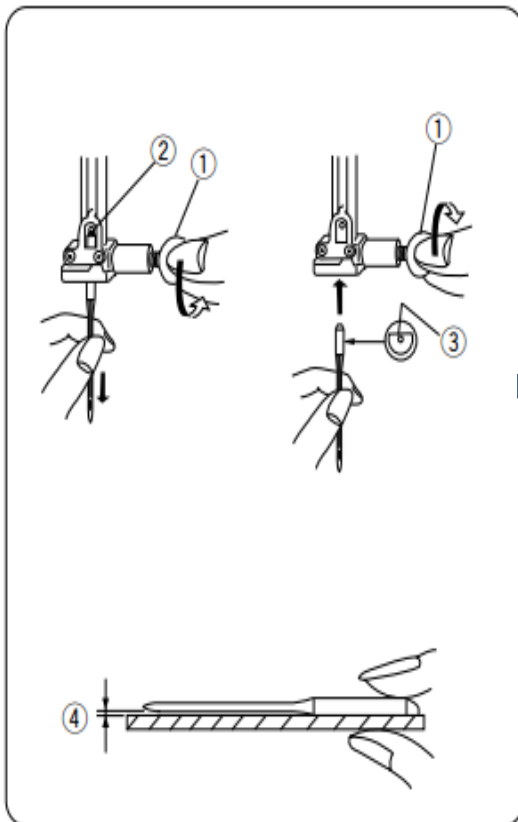
To remove:

Remove the setscrew by turning it counterclockwise with a screwdriver and remove the foot holder.

To attach:

Match the hole in the foot holder with the threaded hole in the presser bar. Fit the setscrew into the hole. Tighten the screw by turning it clockwise with a screwdriver.

- ①, Setscrew
- ②, Foot holder
- ③, Hole
- ④, Threaded hole



Changing Needles

CAUTION:

Always make sure to turn the power switch off and disconnect the machine from power supply before changing the needle.

Raise the needle by turning the handwheel and lower the presser foot.

Turn off the power switch.

- Loosen the needle clamp screw by turning it counterclockwise.

Remove the needle from the clamp.

- ① Needle clamp screw

- Insert a new needle into the needle clamp with the flat side of the needle to the rear.

When inserting the needle into the needle clamp, push it up against the stopper pin and tighten the needle clamp screw firmly.

- ② Stopper pin

- ③ Flat side

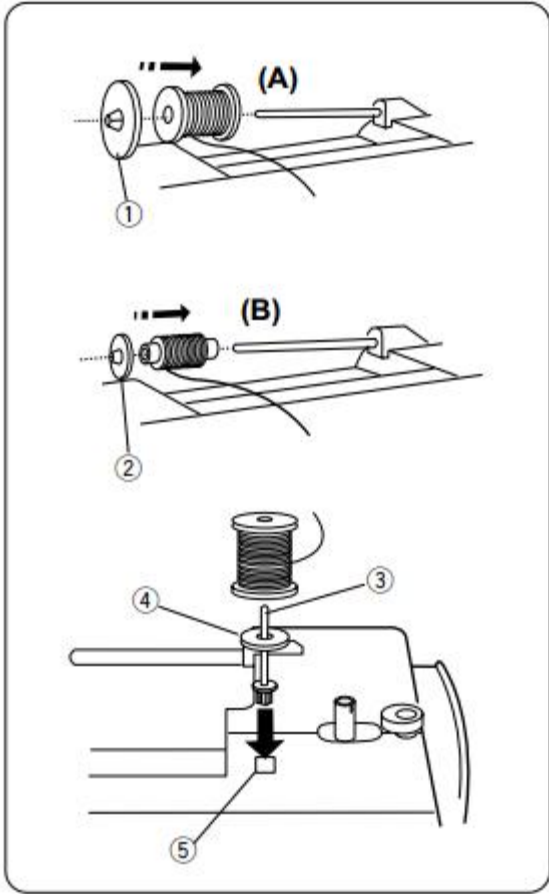
To check needle straightness, place the flat side of the needle onto something flat (a needle plate, glass etc.) The gap between the needle and the flat surface should be consistent.

Never use a blunt needle.

- ④, Gap

Needle and Thread Chart

WEIGHT	FABRIC/LEATHER	TYPE of NEEDLE	NEEDLE SIZE
Very Light	Chiffon, Georgette, Fine Lace, Organdy Net, Tulle	Universal Ball Point	9 (65) 9 (65)
Light	Batiste, Voile, Lawn, Pure Silk, Crepe de Chine, Sheer Crepe, Chambray, Handkerchief Linen, Gingham, Challis, Percalé, Wool Crepe, Peau de Soie, Taffeta, Satin, Silk Surah, Satin-backed Crepe, Qiana	Blue Tipped Needle Universal	11 (75) 11 (75) 12 (80)
	Single Knits, Jersey, Swimwear, and Tricot	Blue Tipped Needle Ball Point	11 (75) 11 (75)
	Leather, Suede	Wedge Point Leather Needle	11 (75)
Medium	Flannel, Velour, Velvet, Muslin, Velveteen, Poplin, Corduroy, Broadcloth, Linen, Chintz, Gabardine, Felt, Terry, Burlap, Quilted Fabrics	Universal	14 (90)
	Double Knits, (synthetic and natural) Stretch Velour, Stretch Terry, Sweater Knits	Ball Point	14 (90)
	Leather, Vinyl, Suede	Wedge Point Leather Needle	14 (90)
Heavy	Denim, Sailcloth, Ticking	Denim Needle	16 (100)
	Double Faced Wool, Heavy Coating, Fake Fur, Drapery Fabrics	Universal	16 (100)
	Leather, Suede	Wedge Point Leather Needle	16 (100) 18 (110)
Very Heavy	Canvas, Duck, Upholstery Fabrics	Universal	16 (100)
Topstitching for Special Finishes		Topstitching Needle	14 (90)



Winding the Bobbin

Setting the spool

Place a spool of thread on the spool pin with the thread coming off the spool as illustrated.

A: Press the large spool holder firmly against the spool of thread.

①, large spool holder

B: For a small spool, use the small spool holder.

②, Small spool holder

Additional spool pin

The additional spool pin is for bobbin winding without unthreading the machine.

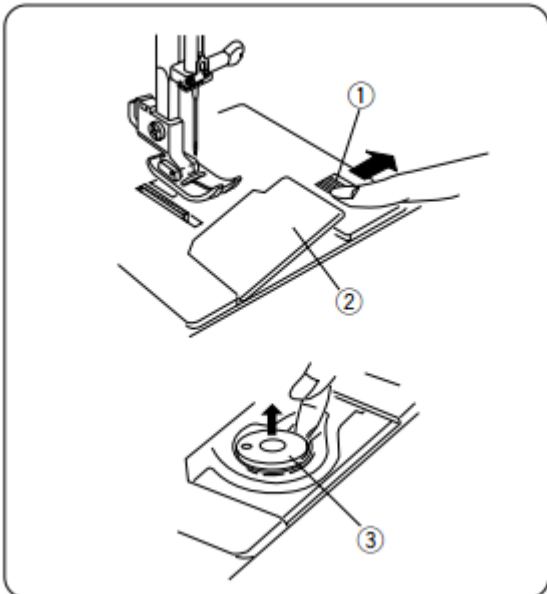
Insert the additional spool pin into the hole.

Place the felt and a spool on the pin.

③, Additional spool pin

④, Spool pin felt

⑤, Spool pin hole



Removing the bobbin

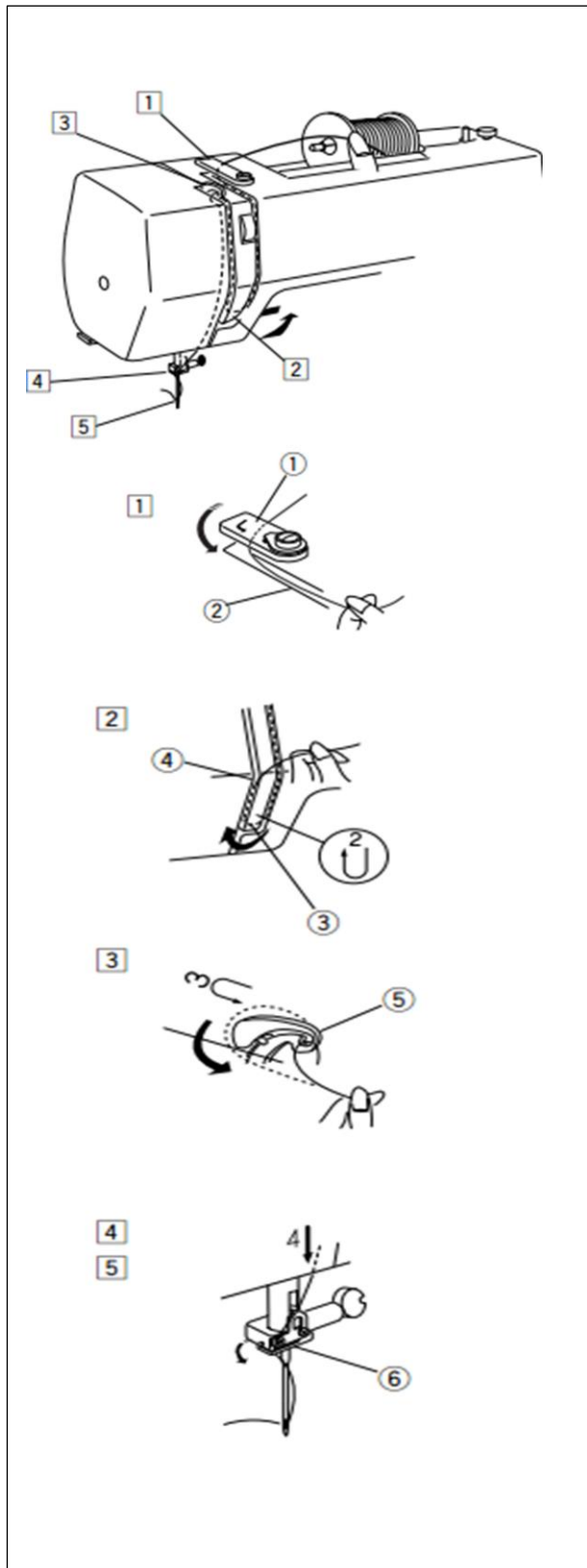
Push the hook cover plate release button to the right and remove the cover plate.

① Hook cover plate release button

② Hook cover plate

Lift out the bobbin.

③, Bobbin



Threading the Machine

To set the needle thread:

Raise the thread take-up lever to the highest position by turning the handwheel. Raise the presser foot.

Draw the thread from the spool and pass it under the thread guide. Then draw it down along the right channel.

- ① Thread guide
- ② Right channel

Draw the thread up around the bottom of the thread guide plate.

Pull the thread up along the left channel

- ③ Thread guide plate
- ④ Left channel

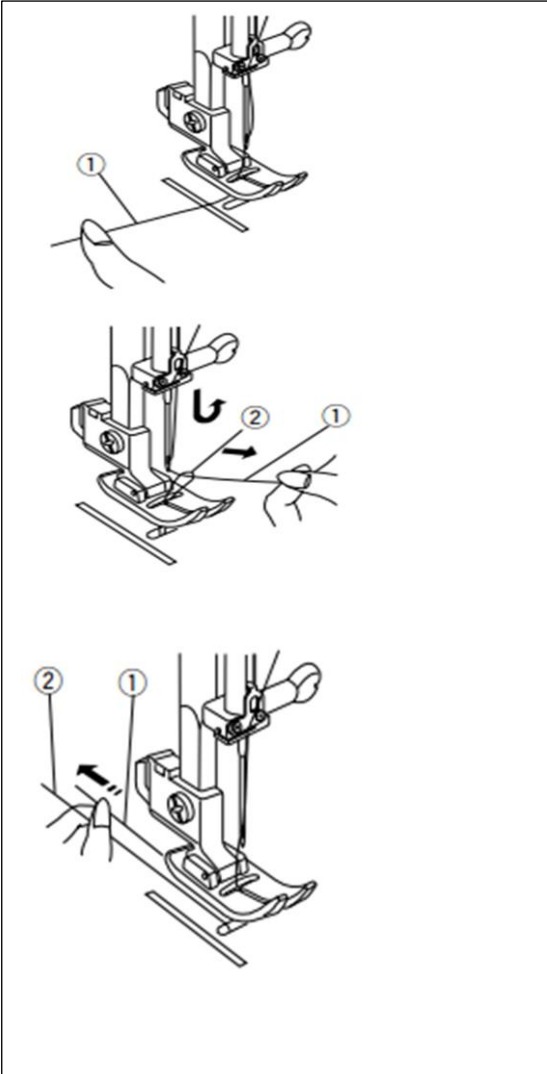
Firmly draw the thread from right to left over the thread take-up lever and down into the take-up lever eye.

- ⑤ Thread take-up lever

Draw the thread down along the left channel and slip the thread behind the needle bar thread guide from the left.

- ⑥ Needle bar thread guide

Pass the thread through the needle eye from the front or use the needle threader (refer to the next page).



Drawing up the Bobbin Thread

Raise the presser foot and hold the needle thread lightly with your left hand.

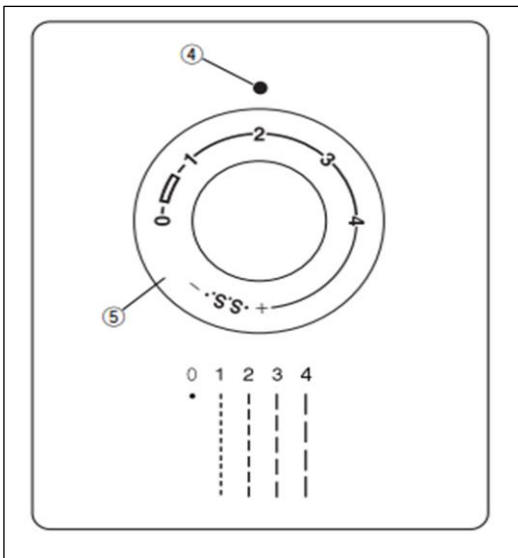
①, Needle thread

Turn the handwheel slowly toward you one complete turn. Bring the bobbin thread up by pulling the needle thread as illustrated.

①, Needle thread

②, Bobbin thread

Pull 4" (10 cm) of both threads back and under the presser foot.



Stitch Length Dial

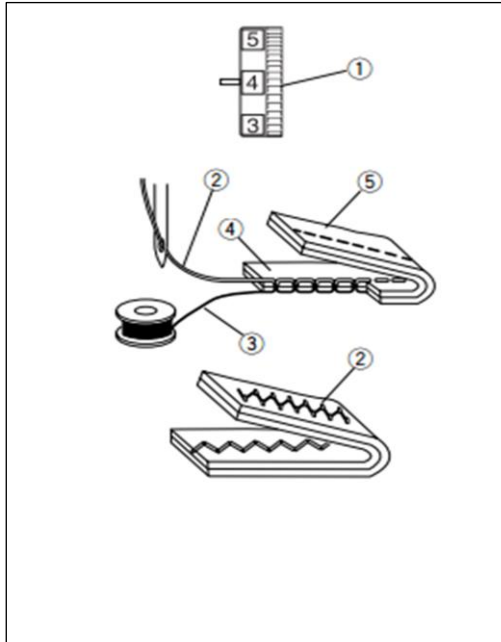
Turn the stitch length dial to set the desired stitch length number at the setting mark.

The higher the number, the longer the stitch.

The “” mark shows the adjustment range when sewing the buttonhole.

④, setting mark

⑤, Stitch length dial



Balancing Needle Thread Tension

The thread tension should be adjusted depending on the sewing materials, layers of fabric and sewing method. To adjust the thread tension, turn the tension dial.

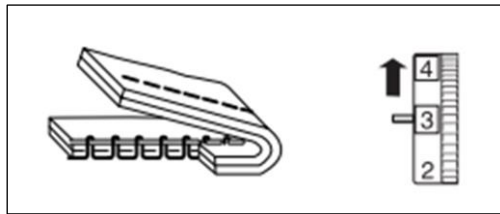
① Tension dial

Balanced tension:

The ideal straight stitch has threads locked between two layers of fabric, as illustrated.

For an ideal zigzag stitch, the bobbin thread does not show on the right side (top side) of the fabric, and the needle thread shows slightly on the wrong side (bottom side) of the fabric.

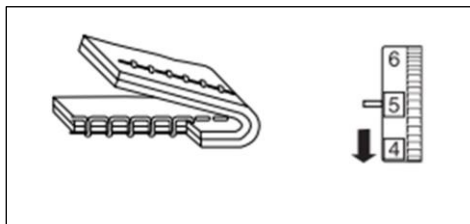
- ② Needle thread (Top thread)
- ③ Bobbin thread (Bottom thread)
- ④ Right side (Top side) of fabric
- ⑤ Wrong side (Bottom side) of fabric



Needle thread tension is too tight:

The bobbin thread (bottom thread) will appear on the right side (top side) of the fabric.

Loosen the needle thread tension by moving the dial to a lower number.



Needle thread tension is too loose:

The needle thread (top thread) will form loops on the wrong side (bottom side) of the fabric.

Tighten the needle thread tension by moving the dial to a higher number.

Section 4; CARE AND MAINTENANCE

WARNING:

Turn the power switch off and unplug the machine before cleaning.

Note;

Do not dismantle the machine in any way other than what is explained in this section.

Clean the outside of the machine with a soft cloth and mild soap.

Cleaning the Hook Race and Feed Dogs

Remove the presser foot and needle.
Remove screw on the needle plate with the screwdriver. Remove the needle plate and take out the bobbin.

① Screw

Lift up the bobbin holder and remove it.

② Bobbin holder

Brush out dust and lint. Wipe the bobbin holder with a soft, dry cloth.

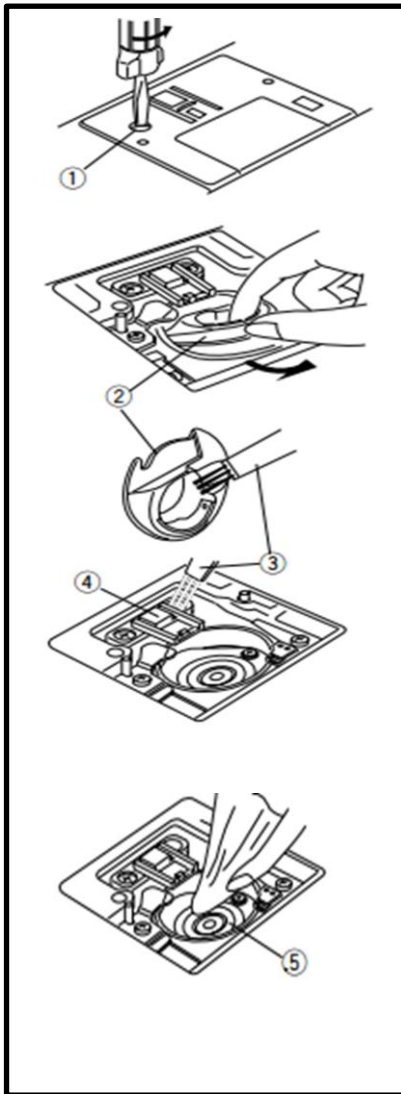
Clean the feed dogs and hook race with the lint brush.

③ Lint brush

④ Feed dogs

Wipe the hook race with a soft, dry cloth.

⑤ Hook race



Section 5; Troubleshooting of sewing machine

Condition	Cause
The needle thread breaks.	<ol style="list-style-type: none"> 1. The needle thread is not threaded properly. 2. The needle thread tension is too tight. 3. The needle is bent or blunt. 4. The needle is incorrectly inserted. 5. The needle thread and the bobbin thread are not drawn to the rear and set properly under the presser foot when starting sewing. 6. The fabric is not drawn to the rear when sewing is finished. 7. The thread is too heavy or too fine for the needle.
The bobbin thread breaks.	<ol style="list-style-type: none"> 1. The bobbin thread is not threaded properly in the bobbin holder. 2. Lint has collected in the bobbin holder. 3. The bobbin is damaged and does not turn smoothly. 4. The thread is wound loosely on the bobbin.
The needle breaks.	<ol style="list-style-type: none"> 1. Needle is incorrectly inserted. 2. The needle is bent or blunt. 3. The needle clamp screw is loose. 4. A proper foot is not used. 5. The fabric is not drawn to the rear when sewing is finished. 6. The needle is too fine for the fabric being sewn.
The needle thread loops.	<ol style="list-style-type: none"> 1. The needle thread tension is too loose. 2. The needle size is not suitable for the thread.
Skipped stitches	<ol style="list-style-type: none"> 1. The needle is incorrectly inserted. 2. The needle is bent or blunt. 3. The needle and/or thread are not suitable for the fabric being sewn. 4. A blue tip needle is not used for sewing stretch, very fine fabrics and synthetics. 5. The needle thread is not threaded properly. 6. A poor quality needle is used.
Seam puckering	<ol style="list-style-type: none"> 1. The needle thread tension is too tight. 2. The needle thread is not threaded properly. 3. The needle is too heavy for the fabric being sewn. 4. The stitch length is too long for the fabric. Use a stabilizer for very fine fabrics.
The cloth is not fed smoothly.	<ol style="list-style-type: none"> 1. The feed dog is packed with lint. 2. The stitches are too fine. 3. The feed dog was not raised after being lowered. 4. The foot pressure is not adjusted properly.
The machine does not work.	<ol style="list-style-type: none"> 1. The machine is not plugged in. 2. Thread is caught in the hook race. 3. The handwheel is pulled for bobbin winding.
Patterns are distorted.	<ol style="list-style-type: none"> 1. The stitch is not balanced.
The buttonhole is not sewn well.	<ol style="list-style-type: none"> 1. The stitch density is not suitable for the fabric being sewn. 2. Interfacing is not being used with stretch fabrics.
Noisy operation	<ol style="list-style-type: none"> 1. The feed dog is packed with lint. 2. Lint has collected in the bobbin holder.

